

# Overview & Eligibility

## About NIISQ and the NIISQ Agency

The National Injury Insurance Scheme, Queensland (NIISQ) provides necessary and reasonable lifetime treatment, care and support to those who sustain eligible serious personal injuries in a motor vehicle accident in Queensland, regardless of who is at fault in the accident.

The National Injury Insurance Agency, Queensland (NIISQ Agency) administers NIISQ in accordance with the National Injury Insurance Scheme (Queensland) Act 2016 and funds the necessary and reasonable treatment, care and support participants need.

NIISQ assists people who are seriously injured to achieve their goals, maximise their independence and participate in the community.

## Timing

You must have sustained an eligible, serious personal injury as a result of a motor vehicle accident in Queensland on or after 1 July 2016.

**For more information about eligibility, refer to our Eligibility Assessment Criteria Quick Guide on our website:**  
[niis.qld.gov.au](https://niis.qld.gov.au)

## Types of injuries

Eligible serious personal injuries:



**Permanent spinal cord injuries**



**Traumatic brain injuries**



**Multiple or high-level limb amputations**



**Permanent injury to the brachial plexus**



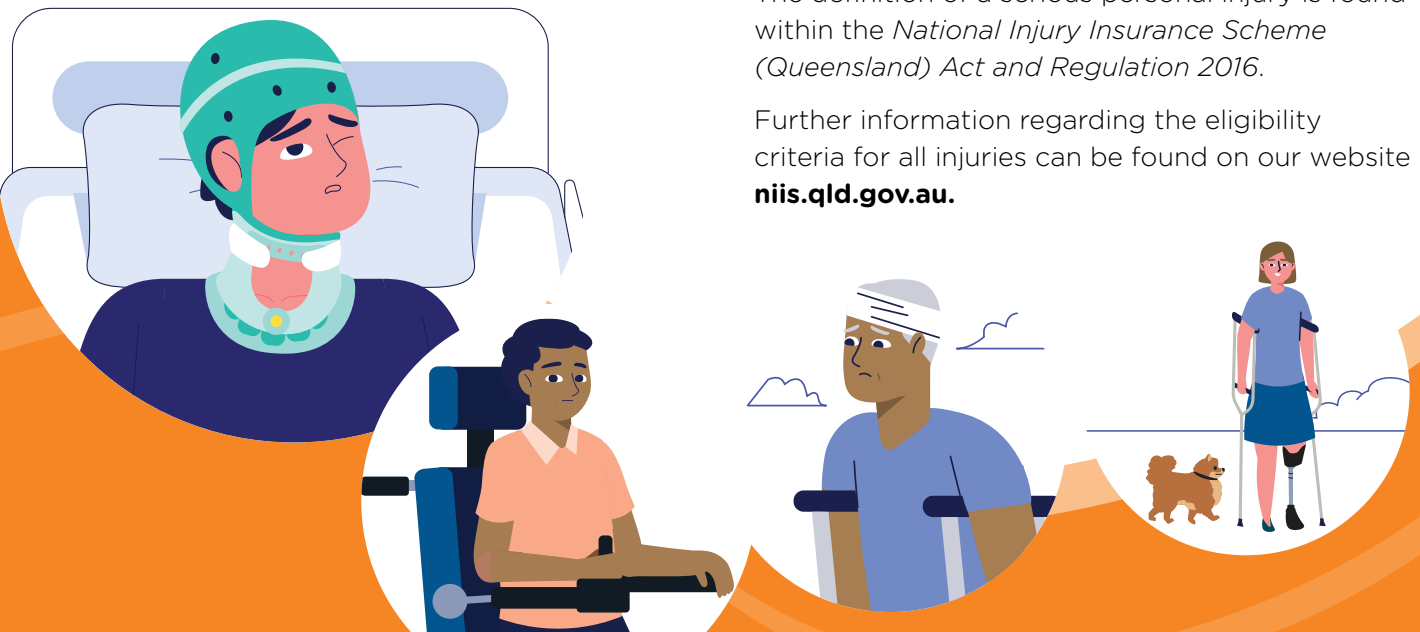
**Severe burns**



**Permanent blindness caused by trauma**

The definition of a serious personal injury is found within the *National Injury Insurance Scheme (Queensland) Act and Regulation 2016*.

Further information regarding the eligibility criteria for all injuries can be found on our website [niis.qld.gov.au](https://niis.qld.gov.au).



## Treatment, care and support

There is no one-size-fits-all approach as serious personal injuries affect everyone differently and their needs change over time. That's why treatment, care and support will be tailored to the individual, taking into consideration their unique and personal circumstances, and their goals.

Treatment, care and support will be delivered in an environment which fosters informed choice, flexibility and empowerment. Treatment, care and support will be regularly reviewed to ensure services adapt to the participant's changing needs.

### Treatment, care and support we pay for includes:

- Medical and pharmaceutical treatment
- Dental treatment
- Rehabilitation
- Respite care
- Aids and appliances (e.g. wheelchairs) other than ordinary personal or household items
- Prostheses
- Educational and vocational training
- Home and transport modifications
- Attendant care and support services
- Ambulance transportation.



Refer to our Treatment, care and support information sheet on our website [niis.qld.gov.au](https://niis.qld.gov.au) for more information about what we pay for and what is not covered.

## The application process

Most people seriously injured in a motor vehicle accident in Queensland will be taken to a major hospital. Subject to your consent, the hospital may help you make an application to NIISQ.

You, or a person authorised by you, may also complete the Application Form - Interim Participation and have a qualified medical specialist complete the included medical certificate.

*The Application Form - Interim Participation* is available on our website at [niis.qld.gov.au](https://niis.qld.gov.au).



## More information

For more information or to obtain copies of information sheets, contact the NIISQ Agency:

☎ 1300 607 566

✉ [enquiries@niis.qld.gov.au](mailto:enquiries@niis.qld.gov.au)

[niis.qld.gov.au](https://niis.qld.gov.au)

## Interim and lifetime cover

All participants deemed eligible for NIISQ, are accepted as an interim participant. This means that NIISQ will fund your necessary and reasonable treatment, care and support services for up to two years.

Towards the end of the two years, the NIISQ Agency will reassess your eligibility and make a decision about whether you qualify as a lifetime participant. If eligible, NIISQ will fund your necessary and reasonable treatment, care and support services for the rest of your life.

A child may remain an interim participant for longer than two years. A child who was younger than four years of age at the time of injury will remain as an interim participant until they reach the age of six years. This will help more accurately assess their rate of recovery and future treatment, care and support needs.

The National Injury Insurance Agency, Queensland (NIISQ Agency) collects and handles information in accordance with the *National Injury Insurance Scheme (Queensland) Act 2016*, the *National Injury Insurance Scheme Queensland Regulation 2016* and the *Information Privacy Act 2009*. You are able to gain access to the personal information held by the NIISQ Agency as provided by the *Information Privacy Act 2009*.